

# Barnet Enfield and Haringey Clinical Strategy



Siobhan Harrington – Programme Director  
16 April 2013

# BEH Clinical Strategy Aims

- Higher quality, safer care for everyone
- Sustainable medical workforce
- Concentrating clinical skills and equipment to meet modern standards
- Developing complementary improvements in primary and community care
- Improving hospital buildings
- Lower rates of infant and adult mortality



# Barnet Enfield and Haringey Clinical Strategy

Delivering improved hospital services for the local population...

- Expand and redevelop women's and children's services
- Expand emergency capacity

Barnet General Hospital

Royal National Orthopaedic Hospital

H. Edgware Community Hospital

Barnet Borough Office

Barnet

H. Finchley Memorial Hospital

North Finchley

Finchley Central

Finchley

Finchley

Finchley

Finchley

Finchley

Finchley

Finchley

Finchley

Finchley

Finchley

Finchley

Finchley

Finchley

Finchley

Finchley

Finchley

Finchley

Finchley

Finchley

Finchley

Finchley

Finchley

Finchley

Finchley

Finchley

Finchley

Finchley

Finchley

Finchley

Finchley

Finchley

Finchley

Finchley

Finchley

Finchley

Finchley

Finchley

Finchley

Finchley

Finchley

Finchley

Finchley

Finchley

Finchley

Finchley

Finchley

Finchley

Finchley

Finchley

Finchley

Finchley

Finchley

Finchley

Finchley

Finchley

Finchley

Finchley

Finchley

Finchley

Finchley

Finchley

Finchley

Finchley

Finchley

Finchley

Finchley

Finchley

Finchley

Finchley

Finchley

Finchley

Finchley

Finchley

Finchley

Finchley

Finchley

Finchley

Finchley

Finchley

Finchley

Finchley

Finchley

Finchley

Finchley

Finchley

Finchley

Finchley

Finchley

Finchley

Finchley

Finchley

Finchley

Finchley

Finchley

Finchley

Finchley

Finchley

Finchley

Finchley

Finchley

Finchley

Finchley

Finchley

Finchley

Finchley

Finchley

Finchley

Finchley

Finchley

Finchley

Finchley

Finchley

Finchley

Finchley

Finchley

Finchley

Finchley

Finchley

Finchley

Finchley

Finchley

Finchley

Finchley

Finchley

Finchley

Finchley

Finchley

Finchley

Finchley

Finchley

Finchley

Finchley

Finchley

Finchley

Finchley

Finchley

Finchley

Finchley

Finchley

Finchley

Finchley

Finchley

Finchley

Finchley

Finchley

Finchley

Finchley

Finchley

Finchley

Finchley

Finchley

Finchley

Finchley

Finchley

Finchley

Finchley

Finchley

Finchley

Finchley

Finchley

Finchley

Finchley

Finchley

Finchley

Finchley

Finchley

Finchley

Finchley

Finchley

Finchley

Finchley

Finchley

Finchley

Finchley

Finchley

Finchley

Finchley

Finchley

Finchley

Finchley

Finchley

Finchley

Finchley

Finchley

Finchley

Finchley

Finchley

Finchley

Finchley

Finchley

Finchley

Finchley

Finchley

Finchley

Finchley

Finchley

Finchley

Finchley

Finchley

Finchley

Finchley

Finchley

Finchley

Finchley

Finchley

Finchley

Finchley

Finchley

Finchley

Finchley

Finchley

Finchley

Finchley

Finchley

Finchley

Finchley

Finchley

Finchley

Finchley

Finchley

Finchley

Finchley

Finchley

Finchley

Finchley

Finchley

Finchley

Finchley

Finchley

Finchley

Finchley

Finchley

Finchley

Finchley

Finchley

Finchley

Finchley

Finchley

Finchley

Finchley

Finchley

Finchley

Finchley

Finchley

Finchley

Finchley

Finchley

Finchley

Finchley

Finchley

Finchley

Finchley

Finchley

Finchley

Finchley

Finchley

Finchley

Finchley

Finchley

Finchley

Finchley

Finchley

Finchley

Finchley

Finchley

Finchley

Finchley

Finchley

Finchley

Finchley

Finchley

Finchley

Finchley

Finchley

Finchley

Finchley

Finchley

Finchley

Finchley

Finchley

Finchley

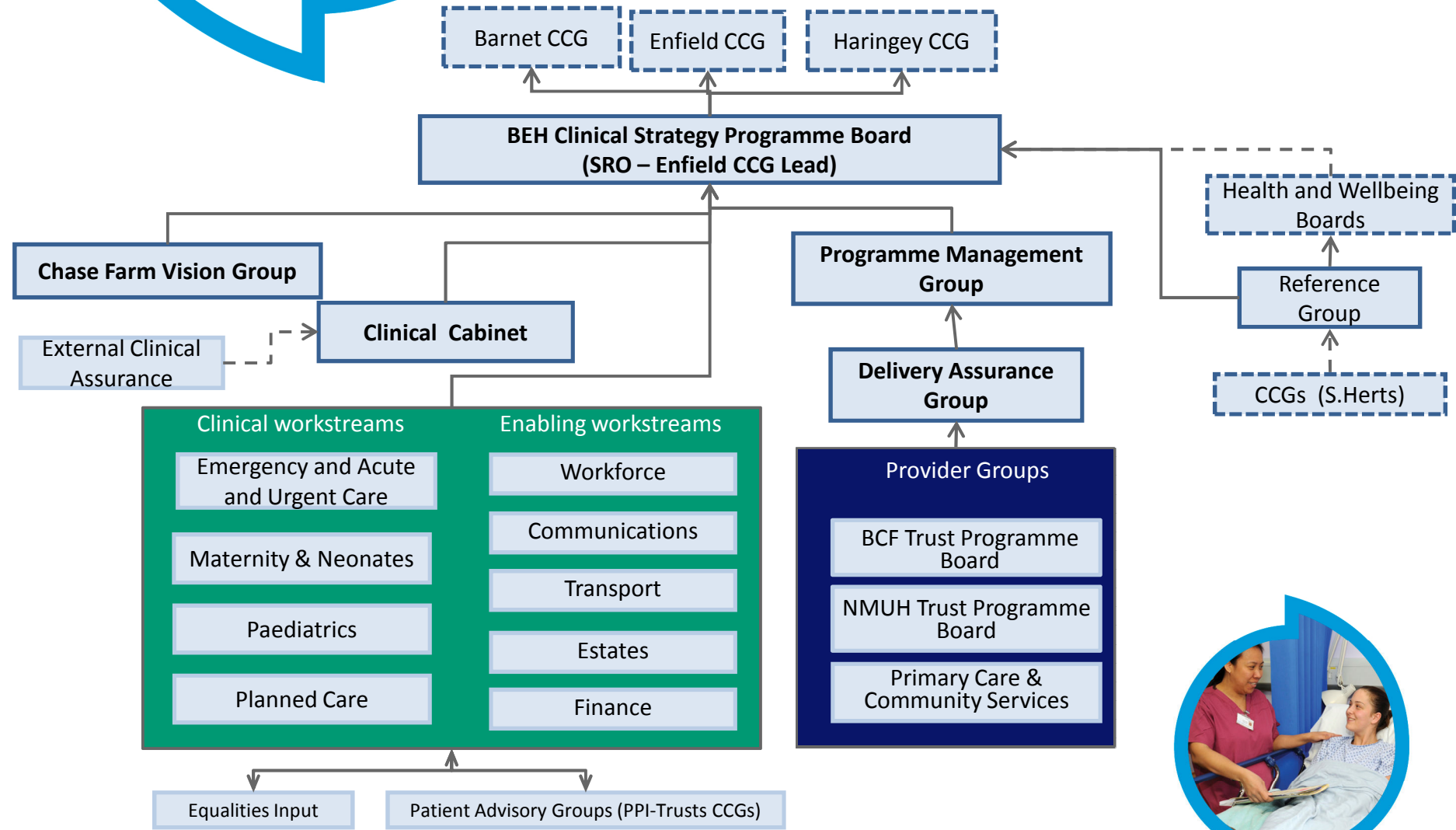
Finchley

Finchley

Finchley

# Barnet Enfield and Haringey Clinical Strategy

# Governance and reporting from April 2013



**Key**     $\longrightarrow$  Report     $- - \longrightarrow$  Inform    Programme led structure    Non-programme led structure

## Progress to date

- Full business cases published
- Programme on track to deliver changes as planned for November 2013
- Building works commenced at Barnet Hospital and North Middlesex Hospital sites and on track
- Clinical workstreams meeting regularly with delivery plans in place
- Models of care agreed
- Benefits framework established with workstreams and CCGs
- Workforce detail shared and consultation and recruitment plans in place
- Clinical Cabinet in place assuring quality and safety through transition
- External assurance process being secured with colleagues from NCB London
- Chase Farm Vision Group engagement plan and co-principles developed
- Transport Group established and Transport Impact Assessment refreshed
- Communications and engagement strategy and plan in place
  - overview and scrutiny committees; Health and wellbeing boards; planned visits to local practices; regular newsletters; area forum



# Primary and community care developments (1)

- A whole system transformation is underway for Barnet, Enfield and Haringey to improve access and quality of care for local people. Improvements include:
  - Investment in buildings to increase capacity in community settings in all three boroughs, for example Edgware Community Hospital, Finchley Memorial Hospital, Vale Drive Primary Care Centre, Oak Lane (Barnet); Forest Road and the Evergreen centre (Enfield) and Lordship Lane development and Hornsey Central (Haringey)
  - Services that have historically been delivered in hospital settings are now being delivered in community settings such as dermatology, gynaecology, ophthalmology, diabetes and ear, nose and throat (ENT) services.
  - Implementing an integrated care strategy where primary care providers, community care providers, social care and voluntary sector providers, as well as hospital providers, are working together to deliver joined up services in the community.
  - Whittington Health, the North Middlesex Hospital, Barnet and Chase Farm Hospitals have all developed urgent care centres. There are also a number of Walk in Centres.
  - Investment in end of life services in all three boroughs to enable advanced care planning to support people in choosing where they may die. This has resulted in additional investment in community palliative care services.



## Primary and community care developments (2)

- NHS North Central London Primary Care Strategy
  - Transformational change, aimed at improving population health, reduce unscheduled secondary care, by improving access, quality and the patient experience
  - 3 year investment programme across Barnet Enfield and Haringey
- First year implementation
  - Non recurring investment in IT and premises, June 2013 will see all practices live on a web based information platform, the majority of practice using patient text messaging services and Docman to electronically share information between all providers of care.
  - Improved diagnostics, in settings closer to the patients home, 24 hour blood pressure monitoring, anticoagulation services, COPD, Community DVT
  - Introduction of Multidisciplinary Case Conferencing to improve the management of patients
  - Introduction of clinical and network leads, to support clinical network development
  - Improved access with a greater number of appointment slots within primary care
  - Partnership working with local pharmacists to divert patients with minor ailment
  - Redesign work looking to Improving efficiency of GP practices, scheduling etc

From April 2013 the implementation of the strategy resides within the CCGs



# Haringey CCG update

- Welfare Advice Hubs have opened in 3 surgeries (4th will open in April).
- Access pilot in one practice proceeding very well with excellent reports from lead GP.
- 22 Health Care Assistant apprenticeships have been awarded
- Sexual Health in Practice (SHiP training) commissioned and starting in April.
- Information Technology
- IT web migration rolled out across 23/38 EMIS practices.
  - 41 out of 52 Practices signed up to IPLATO
  - GP premises improvement grant invitations to bid sent out
- Communications started to promote the PCS projects with stakeholders
- Development of GP practice provider networks
- Wave 1 of an Improving Access collaborative will start in April.
- Education strategy and programme underdevelopment and organising:
  - Practice education leads event in March
  - Event on model for admission avoidance in March
- Installation of BP/BMI monitors in 32 practices.
- Public health practice-level profiles expected from LB Islington
- Training for practices who have signed up to IPLATO in order to go live during April
- Work with QIPP managers to scope out education plan for 2013/14 for their area



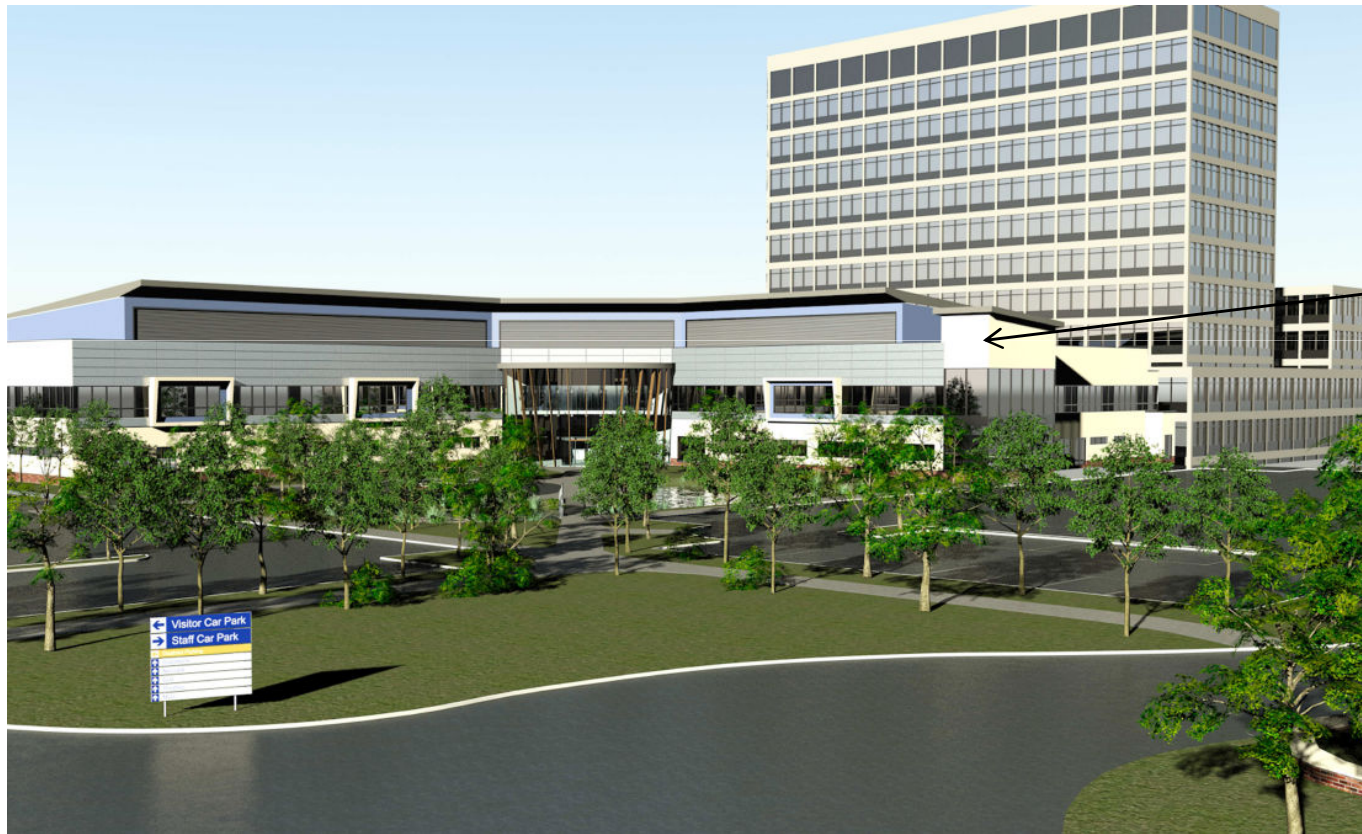


# Changes at North Middlesex University Hospital (1)

- Reconfiguration and expansion of women's & children's services, including:
  - additional paediatric, maternity and neonatal beds
  - triage and related assessment facilities
  - a new midwife-led maternity unit and expansion of consultant-led birthing centre including 2 new theatres.
- Expansion and improvement of outpatient facilities for women's services
- Expansion of general and acute bed capacity to cater for the increase in emergency inpatients
- An improvement of both clinical and functional adjacencies to allow the new service to be delivered efficiently
- Provision of sufficient administration space
- Additional car parking



# Changes at North Middlesex University Hospital (2)



Proposed  
Women and  
Children's  
building



# Key milestones

- **December 2012** Full Business Case Approvals
- **January 2013** Building works at Barnet and North Middlesex hospitals in process
- **February 2013** New HIV Unit opens at the North Middlesex
- **February/March 2013** Recruitment programme underway
- **April 2013** Urgent Care Centre services at Chase Farm Hospital, Barnet Hospital and North Middlesex Hospital
- **April/May 2013** Antenatal booking begins for care at either Barnet or North Middlesex
- **May 2013** Barnet Hospital A&E build works underway  
New build delivered to the North Middlesex Hospital
- **October 2013** Completed works to expand capacity at Barnet and North Middlesex Hospitals for additional activity
- **November 2013** **Move A&E and Maternity from Chase Farm Hospital to expanded Barnet and North Middlesex Hospitals**
- **September 2014** All CFH and North Middlesex works complete



## Next steps

- Urgent Care Centres operating in all three hospital sites
- Building works continue on track
- Staff consultation and recruitment
- Programme to transition to Enfield CCG on 1<sup>st</sup> April under new governance arrangements with Enfield Chief Officer as SRO
- Continue to strengthen communications and engagement activities including public meetings, practice visits, maternity advertising campaign



# Further information

[www.bcf.nhs.uk](http://www.bcf.nhs.uk)

[www.northmid.nhs.uk](http://www.northmid.nhs.uk)

[www.enfieldccg.nhs.uk](http://www.enfieldccg.nhs.uk)

[Siobhan.harrington@nclondon.nhs.uk](mailto:Siobhan.harrington@nclondon.nhs.uk)

